

# MOMENTUM ANALYTICS

MT4 Harmonics by Raf3x

Version 4-0



# Disclosure

Momentum-analytics.io is not an investment advisor but designs, executes, and manages proprietary trading / investment strategies and software for the firm and its qualified partners. We execute these strategies in private partnership vehicles and specific privately managed accounts

Information presented is for educational purposes only and is not intend to make an offer or solicitation for the sale or purchase of any specific securities or investments...



# Table of Contents

- [Where to start](#)
- [Getting the software](#)
- [Software settings](#)
- [Framework](#)
- [Software output](#)
- [Setting up alerts](#)
- [Trade examples](#)
- [Combining Orderflow/Harmonics](#)
- [Orderflow/Harmonics examples](#)
- [Thank you](#)



# Where to start



- <https://simplefx.com/downloads> MT4 client with plenty of pairs to trade. Easy to open demo account.
- [https://www.sr-analyst.com/page\\_hpc\\_metatrader.html](https://www.sr-analyst.com/page_hpc_metatrader.html) Harmonic pattern collection software for mt4 + trial
- <https://harmonictrader.com> Carneys website, register for free content and harmonic webinars.
- <http://www.harmonicpatterncollection.com/> Main software website
- <https://www.cmcmarkets.com/en/> - Broker
- <https://www.icmarkets.com/en> - Broker

# Getting the software

### Harmonic Pattern Collection for MetaTrader 4

Select Language

If you are looking for our HPC for eSignal product, please click here.  
If you are looking for our HPC for NinjaTrader product, please click here.  
If you are looking for our HPC for Sierra Chart product, please click here.



The Harmonic Pattern Collection for MetaTrader 4 is now available! MetaTrader is the gold standard when it comes to currency trading with a user community that spans the globe. MT4 has everything you need when it comes to Forex trading!

The MetaTrader 4 version of HPC has all of the features and functionality that you have come to expect, including a custom market scanning solution only available with our HPC product.

Here is the link to the **HPC for MT4 Installer**. Current version is v19.02.06. Follow the instructions in the Installer section of the **User Guide to install** the HPC Indicators, generate your License String, and request your free trial. If you are already a subscriber, just run the Installer to update your copy of HPC to the most current version.

We do offer a free trial so please take advantage of this free trial **BEFORE** you purchase a subscription. To request your free trial:

- Install the HPC software on your computer. (Instructions) (Video)
- Generate your HPC License String. (Instructions) (Video)
- Send your HPC License String along with your full name to us at [mt4@sr-analyst.com](mailto:mt4@sr-analyst.com) with **MT4 Trial** in the subject field.

### Product Information

(v19.02.06)

### Subscriptions

Free 7-Day Trial is Available!

**Note:** The 1-month, 6-month, and 12-month licenses are recurring (auto-renewal) subscriptions, while the Lifetime license is a one-time fee. For Tier #1 (Pro) and Tier #2 (Patterns Only) we also offer the 6-month and 12-month licenses as a one-time purchase. If you purchase a recurring subscription, it can be managed via our Subscription Portal.

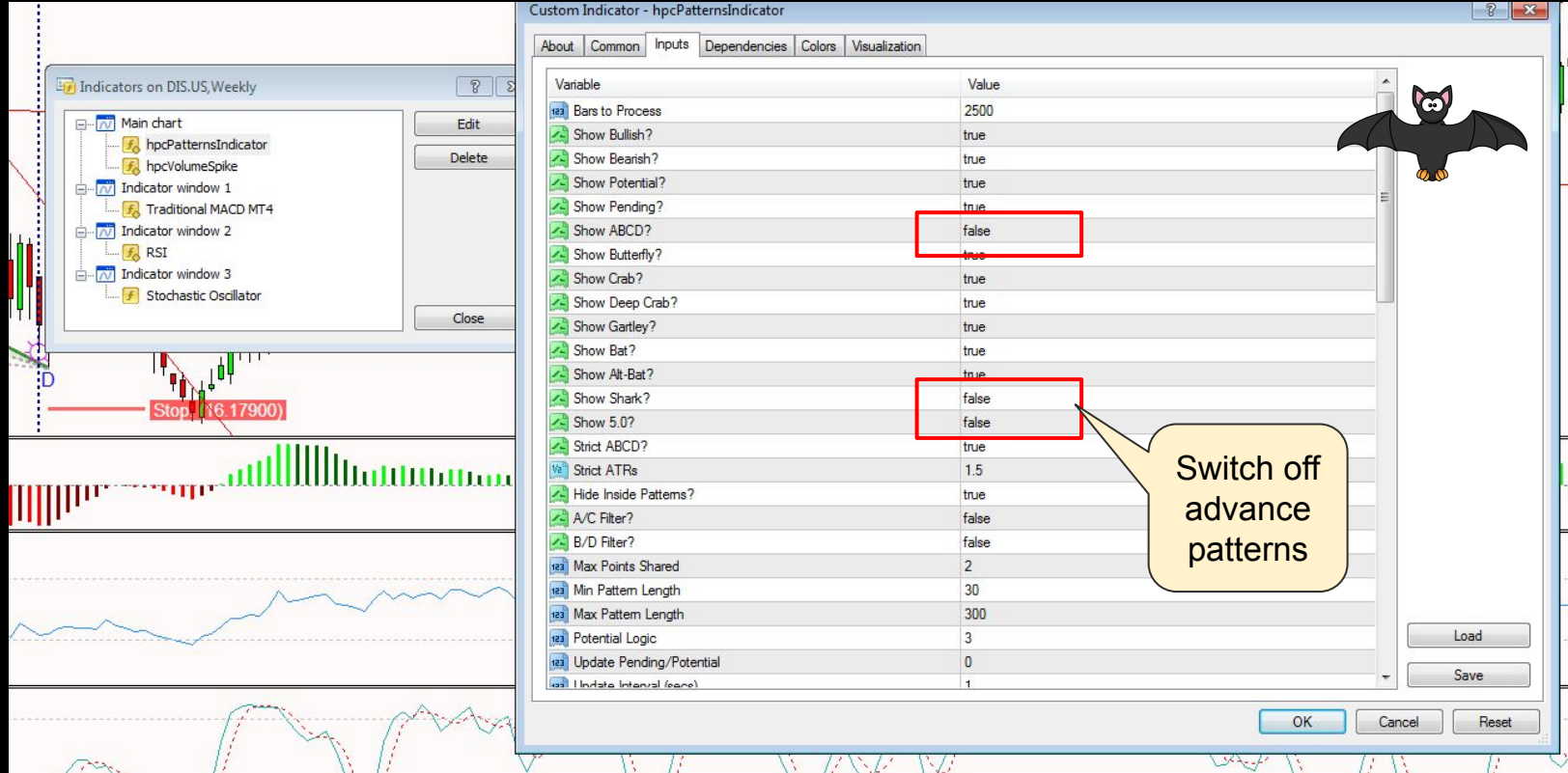
Please be sure to take advantage of the free trial **BEFORE** you purchase a subscription. That way you can be sure that the HPC software is compatible with your current setup.

### Tier #1 - HPC Pro

Select License



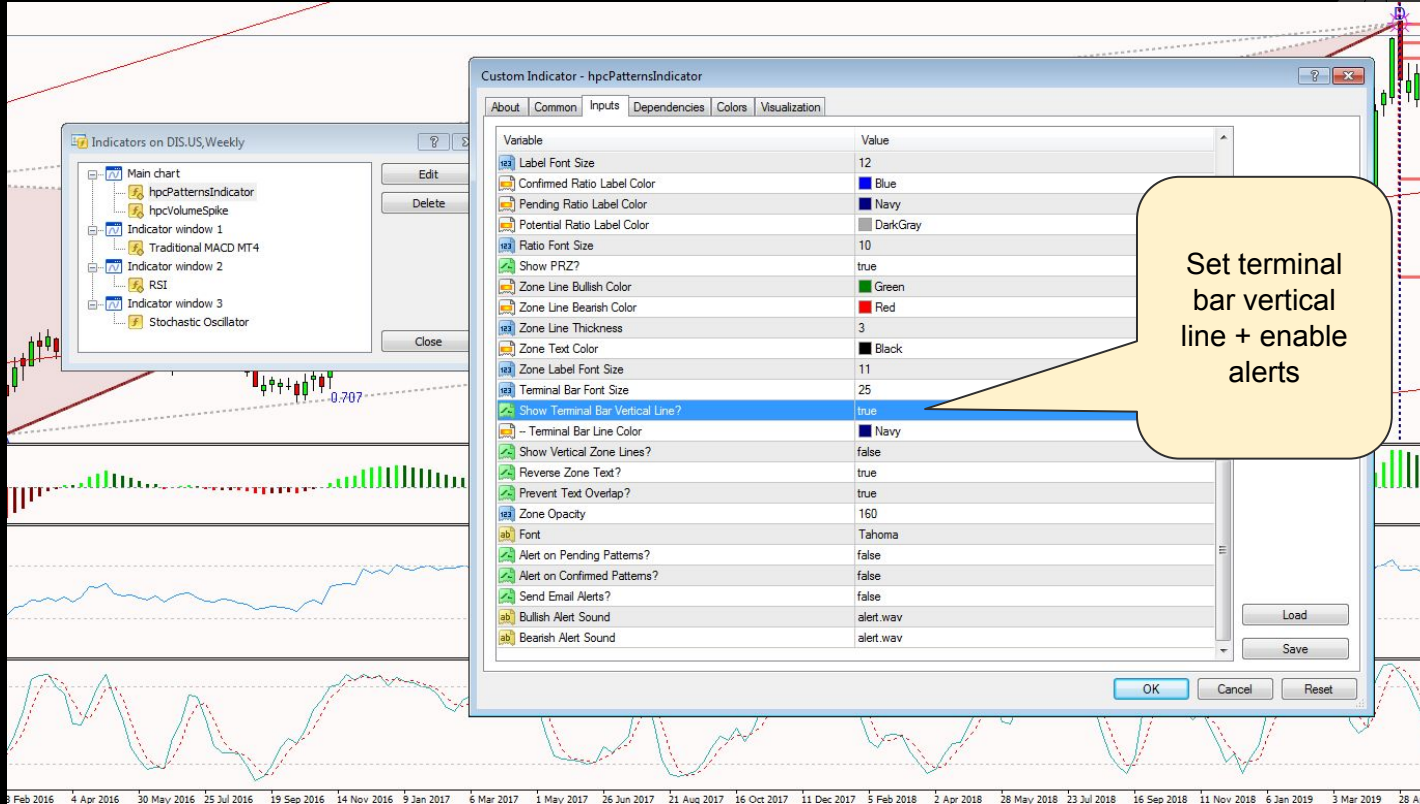
# Software settings - 1/2



The screenshot shows the 'Custom Indicator - hpcPatternsIndicator' settings dialog box. The 'Common' tab is active, displaying a list of variables and their values. A red box highlights the 'Show ABCD?' variable, which is currently set to 'false'. A yellow callout bubble points to this variable with the text 'Switch off advance patterns'. Other variables include 'Bars to Process' (2500), 'Show Bullish?' (true), 'Show Bearish?' (true), 'Show Potential?' (true), 'Show Pending?' (true), 'Show Butterfly?' (true), 'Show Crab?' (true), 'Show Deep Crab?' (true), 'Show Gartley?' (true), 'Show Bat?' (true), 'Show Alt-Bat?' (true), 'Show Shark?' (false), 'Show 5.0?' (false), 'Strict ABCD?' (true), 'Strict ATRs' (1.5), 'Hide Inside Patterns?' (true), 'A/C Filter?' (false), 'B/D Filter?' (false), 'Max Points Shared' (2), 'Min Pattern Length' (30), 'Max Pattern Length' (300), 'Potential Logic' (3), 'Update Pending/Potential' (0), and 'Update Interval (secs)' (1). The background shows a trading chart with a 'Stop' order at 16.17900 and various indicators like hpcPatternsIndicator, hpcVolumeSpike, and Stochastic Oscillator.

| Variable                 | Value |
|--------------------------|-------|
| Bars to Process          | 2500  |
| Show Bullish?            | true  |
| Show Bearish?            | true  |
| Show Potential?          | true  |
| Show Pending?            | true  |
| Show ABCD?               | false |
| Show Butterfly?          | true  |
| Show Crab?               | true  |
| Show Deep Crab?          | true  |
| Show Gartley?            | true  |
| Show Bat?                | true  |
| Show Alt-Bat?            | true  |
| Show Shark?              | false |
| Show 5.0?                | false |
| Strict ABCD?             | true  |
| Strict ATRs              | 1.5   |
| Hide Inside Patterns?    | true  |
| A/C Filter?              | false |
| B/D Filter?              | false |
| Max Points Shared        | 2     |
| Min Pattern Length       | 30    |
| Max Pattern Length       | 300   |
| Potential Logic          | 3     |
| Update Pending/Potential | 0     |
| Update Interval (secs)   | 1     |

# Software settings - 2/2



Indicators on DIS.US,Weekly

- Main chart
  - hpcPatternsIndicator
  - hpcVolumeSpike
- Indicator window 1
  - Traditional MACD MT4
- Indicator window 2
  - RSI
- Indicator window 3
  - Stochastic Oscillator

Custom Indicator - hpcPatternsIndicator

About Common Inputs Dependencies Colors Visualization

| Variable                         | Value     |
|----------------------------------|-----------|
| Label Font Size                  | 12        |
| Confirmed Ratio Label Color      | Blue      |
| Pending Ratio Label Color        | Navy      |
| Potential Ratio Label Color      | DarkGray  |
| Ratio Font Size                  | 10        |
| Show PRZ?                        | true      |
| Zone Line Bullish Color          | Green     |
| Zone Line Bearish Color          | Red       |
| Zone Line Thickness              | 3         |
| Zone Text Color                  | Black     |
| Zone Label Font Size             | 11        |
| Terminal Bar Font Size           | 25        |
| Show Terminal Bar Vertical Line? | true      |
| - Terminal Bar Line Color        | Navy      |
| Show Vertical Zone Lines?        | false     |
| Reverse Zone Text?               | true      |
| Prevent Text Overlap?            | true      |
| Zone Opacity                     | 160       |
| Font                             | Tahoma    |
| Alert on Pending Patterns?       | false     |
| Alert on Confirmed Patterns?     | false     |
| Send Email Alerts?               | false     |
| Bullish Alert Sound              | alert.wav |
| Bearish Alert Sound              | alert.wav |

Set terminal bar vertical line + enable alerts

OK Cancel Reset

8 Feb 2016 4 Apr 2016 30 May 2016 25 Jul 2016 19 Sep 2016 14 Nov 2016 9 Jan 2017 6 Mar 2017 1 May 2017 26 Jun 2017 21 Aug 2017 16 Oct 2017 11 Dec 2017 5 Feb 2018 2 Apr 2018 28 May 2018 23 Jul 2018 16 Sep 2018 11 Nov 2018 6 Jan 2019 3 Mar 2019 28 Apr 2019

# Framework



- Remember it's a **trade location tool** - we do not take every single trade
- **Identification**, favour nice clean patterns. Wait for terminal bar
- **2 trendlines**, A-C ( Main trendline) and additional one if needed. Price need to break the trendline (Watch RSI too!)
- **Check for divergence**, looking for structure in price and indicators (Basically 3 step process)
- **Entry** - Ws / Ms, candle patterns, rechecks of necklines / trendlines
- **Exit** - Set targets T1 and T2, extension levels or riding the trendline following the price / RSI

*\*\*\* would recommend that you re-draw patterns in TradingView*



# Software output



# Setting up alerts 1/3

hpcPatternScanner [Inv: W1]

Stay on Top

| Symbol | Stamp    | Last   | Status | Pote... | Pattern   | / Bars      | Stop  | T1     |
|--------|----------|--------|--------|---------|-----------|-------------|-------|--------|
| BMW.DE | 13:58:22 | 64.45  |        |         | crab      | SHARK 3     | 58.61 | 79.24  |
| CMA.UK | 13:58:22 | 87.37  |        |         | DEEP CRAB | 5           | 79.63 | 119.82 |
| VOD.UK | 13:58:22 | 125.13 |        |         | crab      | DEEP CRAB 5 | 96.26 | 174.02 |
| RWE.DE | 13:58:22 | 21.59  |        |         | BAT       | 13          | 27.84 | 18.60  |

hpcPatternScanner [Inv: W1]

Stay on Top

| Symbol    | Stamp    | Last   | Stat... | Potential | Pattern   | / Bars | Stop   | T1   |
|-----------|----------|--------|---------|-----------|-----------|--------|--------|------|
| TUPRAS.TR | 13:58:22 | 113.51 |         |           | CRAB      | 14     | 182.80 | 131. |
| GLE.FR    | 13:58:22 | 21.71  |         |           | DEEP CRAB | 35     | 28.48  | 39.6 |
| SAI.FR    | 13:58:22 | 75.72  |         |           | ABCD      | 36     | 79.26  | 72.4 |
| UG.FR     | 13:58:22 | 21.28  |         |           | DEEP CRAB | 121    | 21.98  | 13.7 |
| BA.US     | 13:58:22 | 371.05 |         |           | CRAB      | 121    | 201.50 | 153. |
| FR.FR     | 13:58:22 | 27.96  |         |           | DEEP CRAB | 124    | 65.84  | 50.3 |

hpcPatternScanner [Inv: W1]

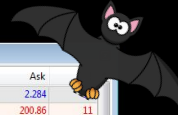
Stay on Top

| Symbol  | Stamp    | Last    | Stat... | Potential | Pattern   | / Bars | Stop    | T1      | T2      |
|---------|----------|---------|---------|-----------|-----------|--------|---------|---------|---------|
| DIS.US  | 13:58:22 | 140.18  |         |           | DEEP CRAB | 8      | 156.77  | 120.82  | 107.62  |
| DAX30   | 13:58:22 | 12263.7 |         |           | S-0       | 14     | 12625.2 | 10452.1 | 10074.0 |
| FCX.US  | 13:58:22 | 11.23   |         |           | BAT       | 26     | 7.67    | 13.64   | 16.14   |
| BAC.US  | 13:58:22 | 27.93   |         |           | BAT       | 26     | 20.47   | 26.58   | 29.02   |
| GS.US   | 13:58:22 | 196.56  |         |           | DEEP CRAB | 26     | 140.52  | 198.78  | 227.97  |
| MCD.US  | 13:58:22 | 204.39  |         |           | BUTTERFLY | 30     | 192.00  | 173.93  | 163.54  |
| IBEX35  | 13:58:22 | 9154    |         |           | BAT       | 35     | 8133    | 9605    | 10213   |
| AMZN.US | 13:58:22 | 1899.54 |         |           | ABCD      | 42     | 2126.83 | 1822.55 | 1358.67 |
| PFE.US  | 13:58:22 | 43.01   |         |           | CRAB      | 43     | 45.33   | 37.67   | 34.67   |
| USOIL   | 13:58:22 | 58.40   |         |           | BUTTERFLY | 51     | 78.20   | 56.21   | 45.32   |
| WKE.US  | 13:58:22 | 82.94   |         |           | CRAB      | 52     | 82.89   | 68.78   | 61.23   |
| XPOJ.SD | 13:58:22 | 1535.78 |         |           | DEEP CRAB | 75     | 1232.57 | 875.53  | 713.37  |
| SMD0    | 13:58:22 | 8964    |         |           | BAT       | 89     | 9841    | 8594    | 8146    |
| XAUUSD  | 13:58:22 | 1406.03 |         |           | BAT       | 94     | 1410.74 | 1267.77 | 1212.37 |
| HSIB0   | 13:58:22 | 28222   |         |           | ABCD      | 98     | 28365   | 24194   | 21936   |
| AAPL.US | 13:58:22 | 200.86  |         |           | DEEP CRAB | 116    | 159.76  | 124.03  | 110.82  |
| ATV.US  | 13:58:22 | 46.81   |         |           | ABCD      | 117    | 51.58   | 37.92   | 30.21   |
| JPM.US  | 13:58:22 | 108.70  |         |           | DEEP CRAB | 136    | 86.16   | 69.66   | 63.12   |

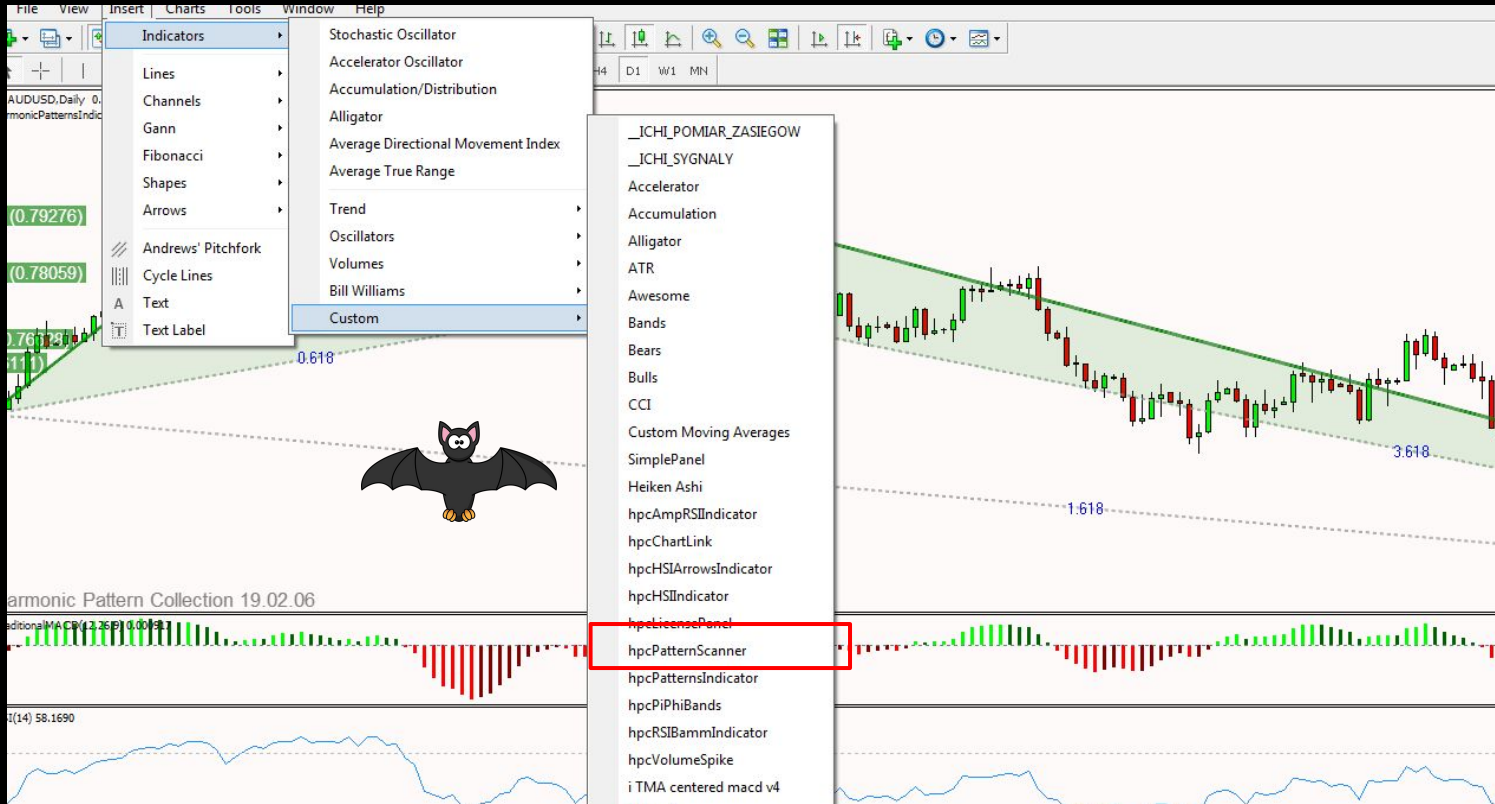
Market Watch: 13:58:29

| Symbol     | Bid      | Ask      |
|------------|----------|----------|
| NATURALGAS | 2.270    | 2.284    |
| AAPL.US    | 200.75   | 200.86   |
| AMD.US     | 30.38    | 30.44    |
| AMZN.US    | 1901.15  | 1903.41  |
| ATV.US     | 46.84    | 46.98    |
| BA.US      | 371.14   | 371.72   |
| BABA.US    | 169.39   | 169.56   |
| BAC.US     | 27.93    | 28.05    |
| BIDU.US    | 115.82   | 115.99   |
| C.US       | 66.98    | 67.16    |
| DIS.US     | 140.18   | 140.38   |
| FB.US      | 189.19   | 189.34   |
| FCX.US     | 11.24    | 11.29    |
| FSLR.US    | 62.91    | 63.19    |
| GM.US      | 38.26    | 38.39    |
| GOOGL      | 1086.31  | 1087.71  |
| GWPH.US    | 170.03   | 171.17   |
| JPM.US     | 108.72   | 108.90   |
| GS.US      | 196.59   | 196.97   |
| MCD.US     | 204.43   | 204.62   |
| NFLX.US    | 365.03   | 365.59   |
| NKE.US     | 82.97    | 83.12    |
| NVDA.US    | 160.77   | 160.94   |
| PG.US      | 110.05   | 110.15   |
| QCOM.US    | 75.09    | 75.23    |
| PFE.US     | 43.01    | 43.13    |
| RACE.US    | 159.28   | 159.90   |
| SNAP.US    | 14.68    | 14.78    |
| T.US       | 32.61    | 32.75    |
| TLRY.US    | 46.44    | 46.89    |
| TLA.US     | 224.86   | 225.51   |
| TWTR.US    | 35.06    | 35.18    |
| UBER.US    | 42.63    | 42.75    |
| WMT.US     | 110.14   | 110.41   |
| XOM.US     | 76.71    | 76.84    |
| BTCCNY     | 88473.44 | 88772.69 |
| BTCCUSD    | 12852.13 | 12889.66 |
| BARC.UK    | 148.72   | 148.92   |
| BATS.UK    | 2794.00  | 2797.50  |
| BP.UK      | 553.95   | 554.35   |

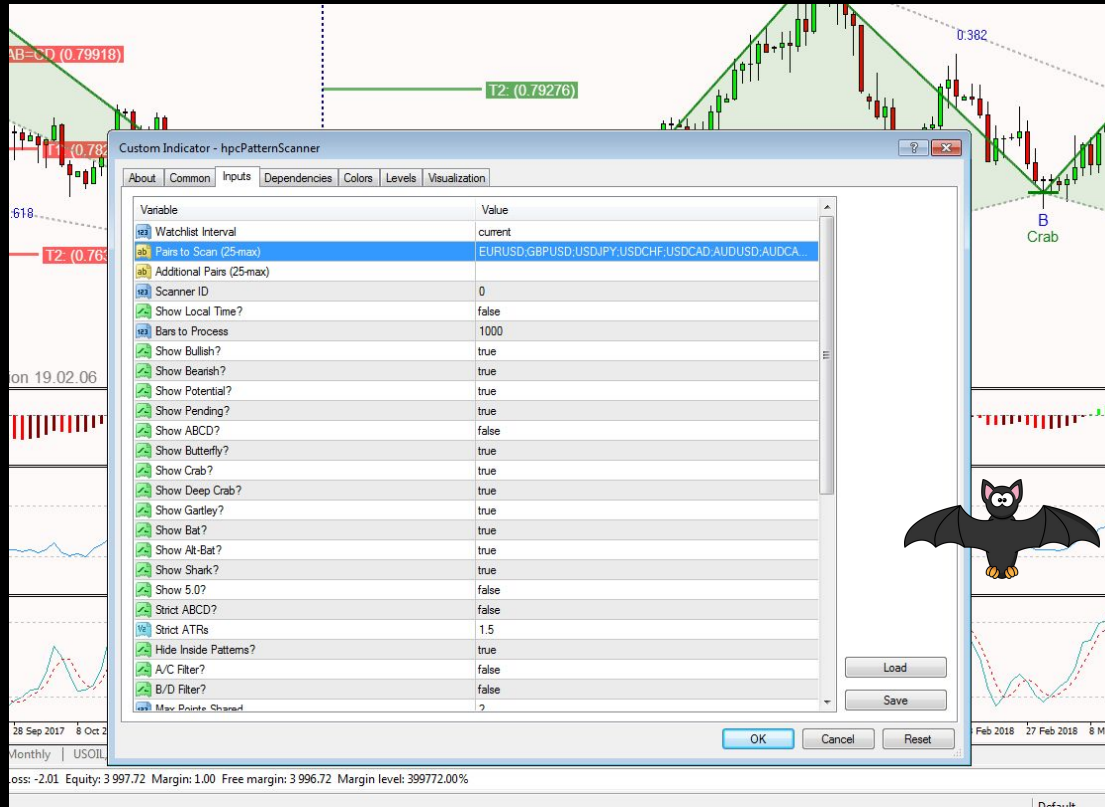
Symbols | Tick Chart



# Setting up alerts 2/3



# Setting up alerts 3/3



The screenshot shows the 'Custom Indicator - hpcPatternScanner' configuration window. The 'Pairs to Scan (25-max)' field is set to 'EURUSD;GBPUSD;USDJPY;USDCHF;USDCAD;AUDUSD;AUDCAD'. The 'Watchlist Interval' is set to 'current'. The 'Scanner ID' is '0'. The 'Show Local Time?' checkbox is unchecked, while all other 'Show' checkboxes are checked. The 'Max Points Shared' is set to '2'. The background chart shows a candlestick pattern labeled 'B Crab' with a green trendline and a red dashed line. A bat icon is visible in the bottom right of the chart area.

| Variable                  | Value  |
|---------------------------|--|
| Watchlist Interval        | current  |
| Pairs to Scan (25-max)    | EURUSD;GBPUSD;USDJPY;USDCHF;USDCAD;AUDUSD;AUDCAD |
| Additional Pairs (25-max) |  |
| Scanner ID                | 0  |
| Show Local Time?          | false  |
| Bars to Process           | 1000   |
| Show Bullish?             | true   |
| Show Bearish?             | true   |
| Show Potential?           | true   |
| Show Pending?             | true   |
| Show ABCD?                | false  |
| Show Butterfly?           | true   |
| Show Crab?                | true   |
| Show Deep Crab?           | true   |
| Show Gartley?             | true   |
| Show Bat?                 | true   |
| Show Alt-Bat?             | true   |
| Show Shark?               | true   |
| Show 5.0?                 | false  |
| Strict ABCD?              | false  |
| Strict ATRs               | 1.5  |
| Hide Inside Patterns?     | true   |
| A/C Filter?               | false  |
| B/D Filter?               | false  |
| Max Points Shared         | 2  |

loss: -2.01 Equity: 3997.72 Margin: 1.00 Free margin: 3996.72 Margin level: 399772.00%

# Trade examples

- Bats
- Crabs
- Deep Crabs
- Butterflies
- Gartleys



# Panasonic - 2012



# Nintendo - 2015



# Disney - 2006





# Disney - 2018



# Sony - 2012





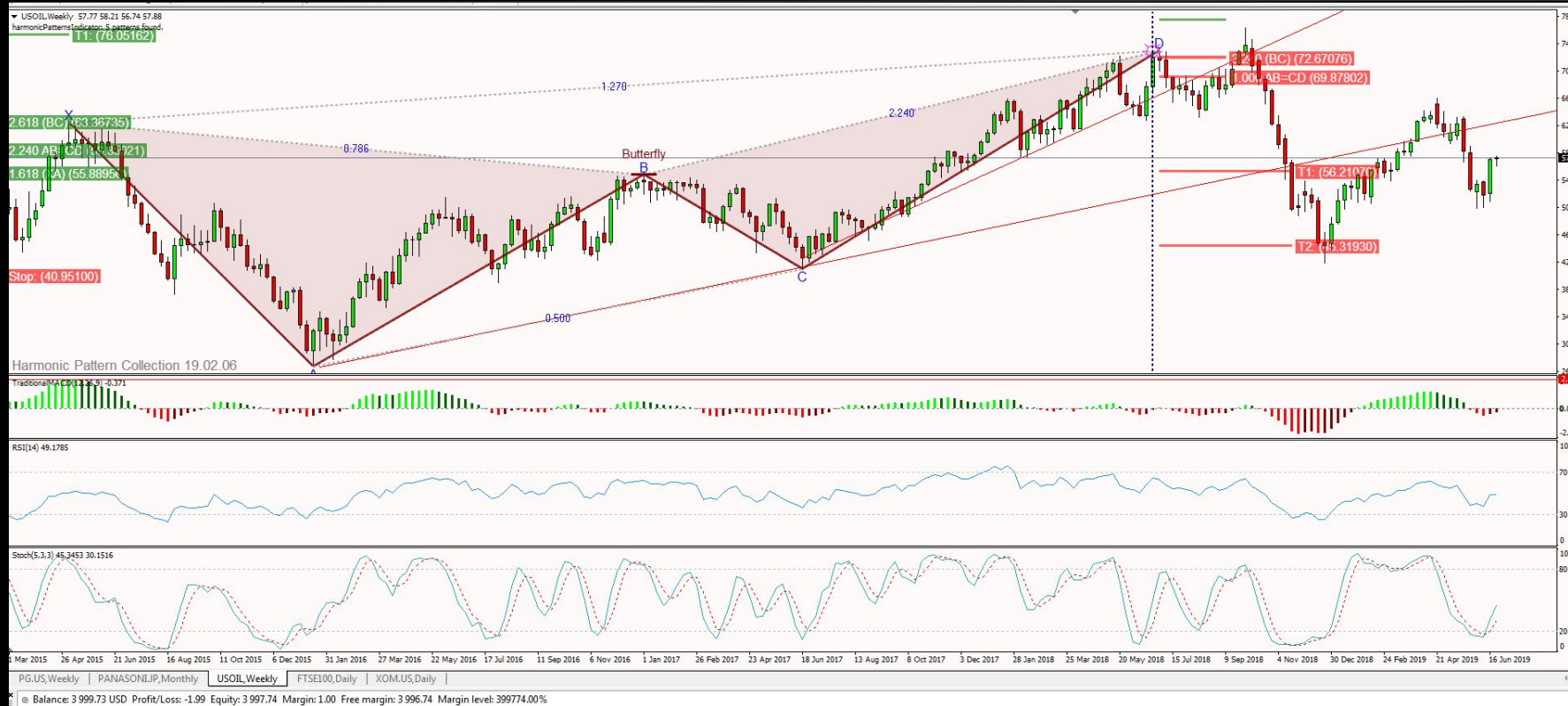
CNA.UK:Monthly 36.75 45.99 36.10 44.82  
harmonicPatternsIndicator: 3 patterns found.



# EasyJet - 2014 to 2018 (1/2)



# USOIL - 2018



# Natural Gas - 4 Hour



# SPX500 - 2019

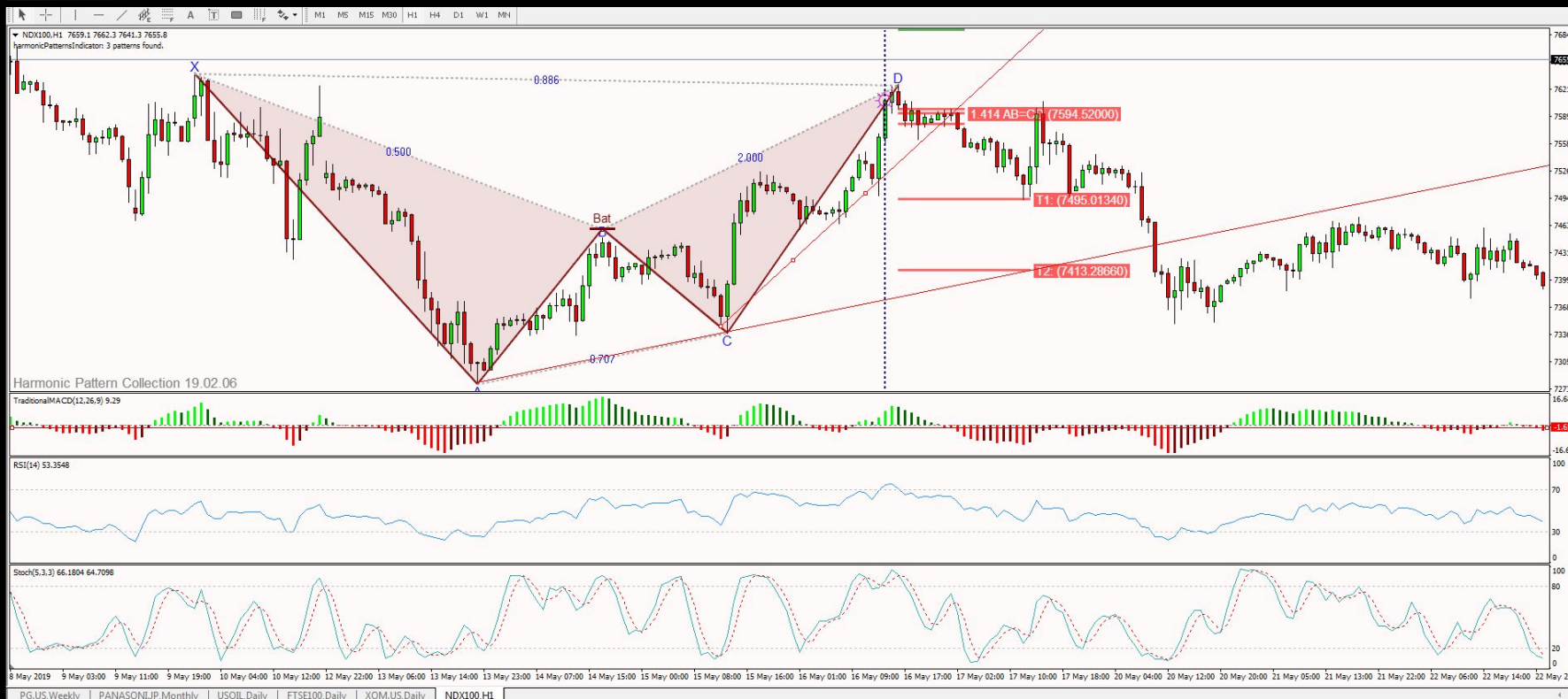


# TLRY - 4 Hour

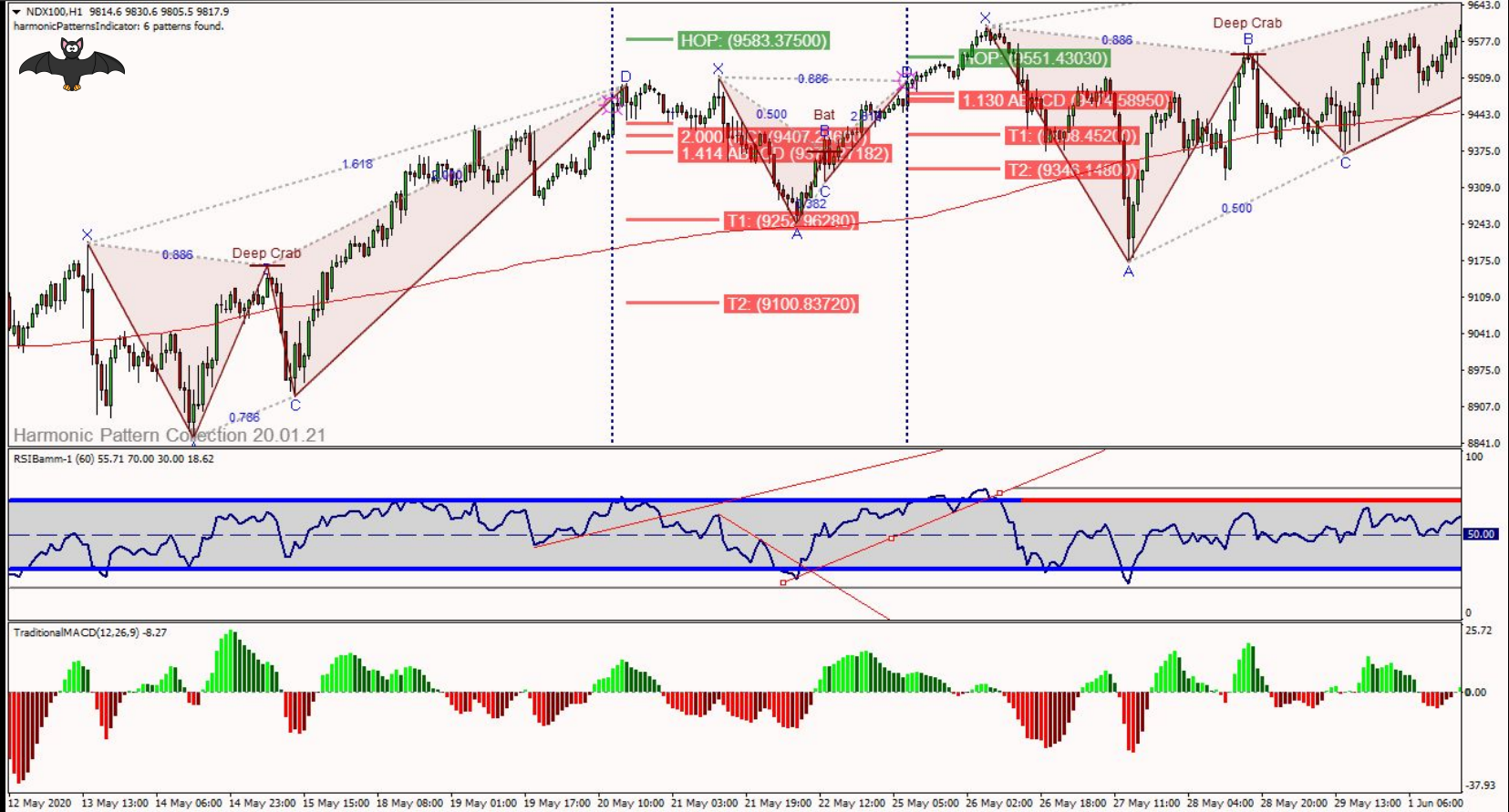




# NASDAQ - into NYKZ 2019



# NASDAQ - 1 Hour - May 2020



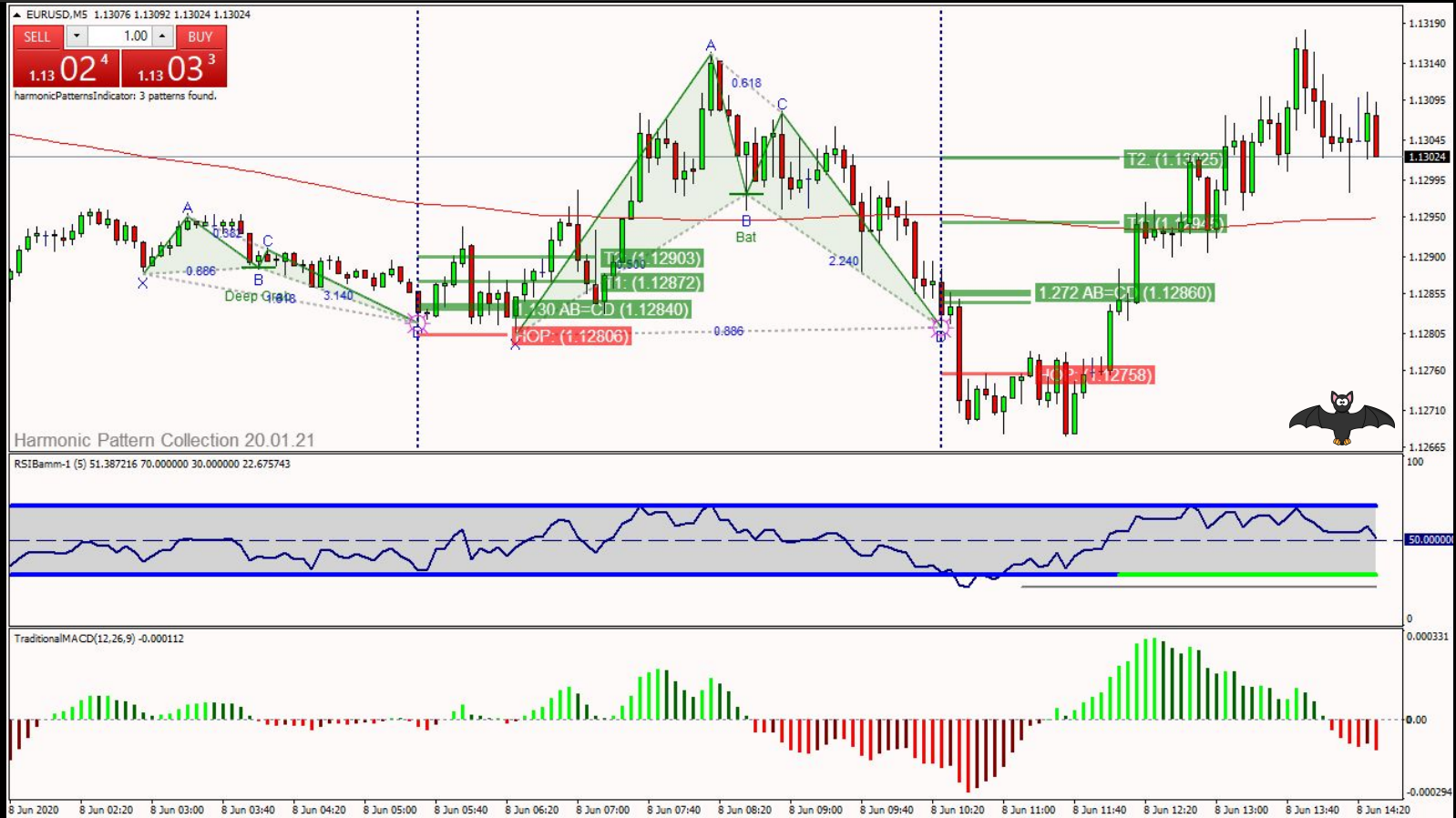
# BTCUSD - 1HR May 2020



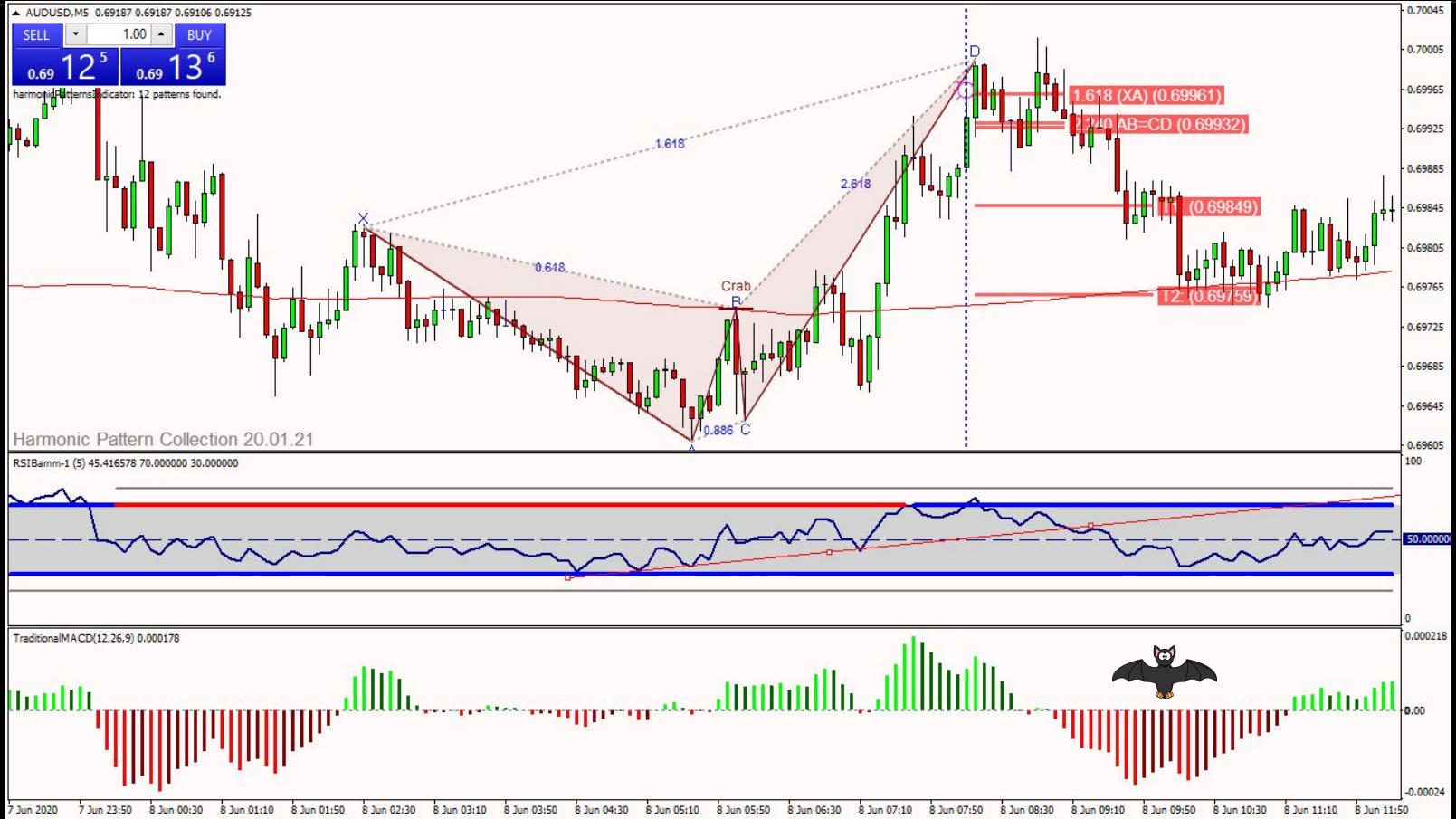
# BTCUSD - 15m June 2020



# EURUSD - 5m June 2020

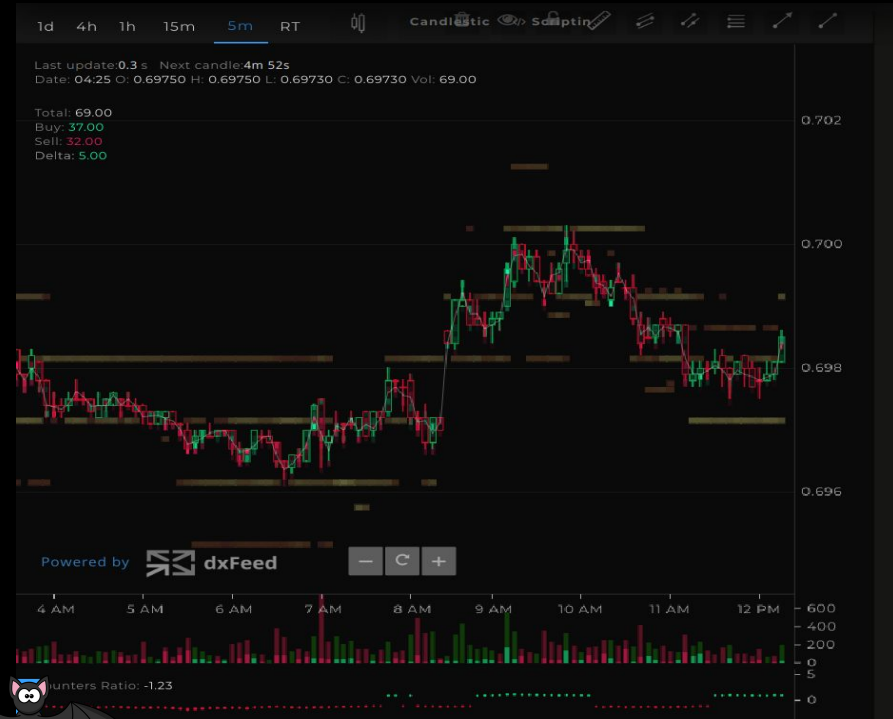


# AUDUSD - 5m June 2020



# Combining Orderflow/Harmonics

- Use **order flow** charting tool
- i.e tensor
- **Combining with harmonics** software - gives really powerful level confirmations
- **Example** of order flow chart from tensor
- This approach is best for **lower time-frames** / day trading (ie 5-15 min)



# AUD/USD - 5 min - Page 1/3

1d 4h 1h 15m **5m** RT

Last update: 0.3 s Next candle: 4m 52s  
Date: 04:25 O: 0.69750 H: 0.69750 L: 0.69730 C: 0.69730 Vol: 69.00

Total: 69.00  
Buy: 37.00  
Sell: 32.00  
Delta: 5.00



Powered by dxFeed

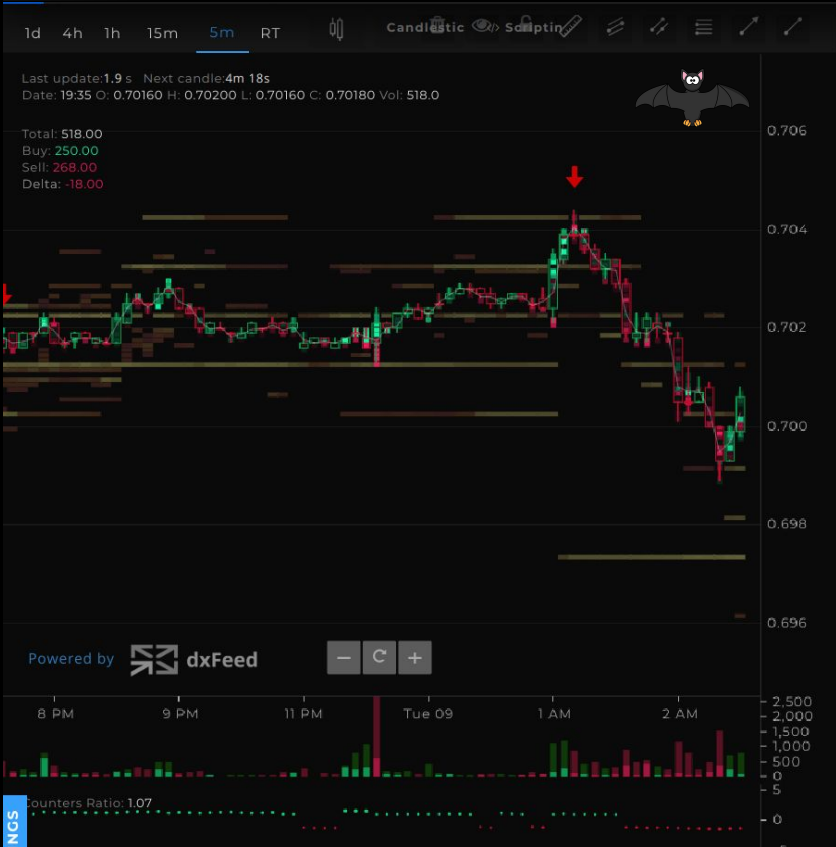


Counters Ratio: -1.23

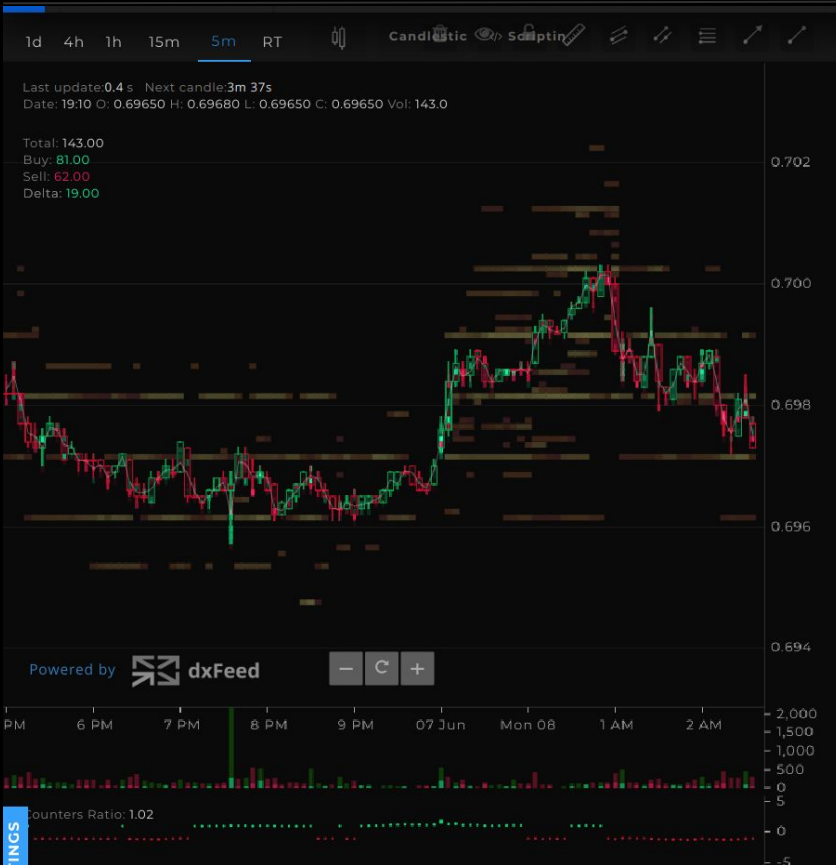




# AUD/USD - 5 min - Page 2/3



# AUD/USD - 5 min - Page 3/3



# EUR/USD - 5 min Page 1/1



# GBP/USD - 5 min Page 1/2



# GBP/USD - 5 min Page 2/2



# BTC/USD - 5 min Page 1/1





# Thank you !!!

If you decide to purchase a licence with Tensor, please use this link :

[www.tensorcharts.com/?r=883](http://www.tensorcharts.com/?r=883)

For <http://www.harmonicpatterncollection.com/> please let me know via DM on the TRI site and I will give you a referral email