



MOMENTUM ANALYTICS

Target Tools - Fib extensions, Chaos & Bobo PRZ Levels & Linear Regression Bands

09 Mar 2020

Disclosure



Momentum-analytics.io is not an investment advisor but designs, executes, and manages proprietary trading / investment strategies and software for the firm and its qualified partners. We execute these strategies in private partnership vehicles and specific privately managed accounts

Information presented is for educational purposes only and is not intend to make an offer or solicitation for the sale or purchase of any specific securities or investments...

Contents



- Old Targeting technique
 - 0.786 line in the sand (LITS)
 - Crypto 0.886 entry
- New Targeting tool - Fib Extensions
 - Chaos PRZ* - 4.669
 - Bobo PRZ - 8.77
- Fib extension observations & trade examples
- Linear Regression Chaos Bands
- Appendix

**PRZ = Potential Reversal Zone*

Target Tool - Using Fibs (LITS - 0.786)

- Look to line up the 0.786 fib level to the break out level
 - Place fib tool on bottom of range, then pull it up until the 0.786 level is inline with the breakout level (1.996)
 - Target projected (3.0216)
- Have had better success using line chart (close values) i.e candle bodies for projections



Target Tool - Using Fibs (Crypto - 0.886)

- Look to line up the 0.886 fib level to the break out level
 - Place fib tool on bottom of range, then pull it up until the 0.886 level is inline with the breakout level (1.9968)
 - Target projects (4.167)
- Have had better success using line chart (close values) or candle bodies for projections



Target Tool - Fib Extensions

- Fib settings for trading tool
 - 0.00
 - 1.00
 - 1.618
 - 2.00
 - 2.618
 - 4.669* (Chaos PRZ) **
 - 8.77 (Bobo PRZ) - **how did we get this level**
- Idea is to frame the M or W (between 0 - 1) and use the fib tool to generate KCL's (Key Chaos Levels)
- Have had better success using line chart (close values) or candle bodies for projections
- Note - these are PRZ levels - emphasis is on "Potential" - ensure you look at indicators and have at least 3 reason

$$\begin{aligned} &1 / (1 - 0.886) \\ &= 1 / 0.114 \\ &= 8.77 \end{aligned}$$

* Also see "The Feigenbaum Constant (4.669) - Numberphile" on YouTube [here](#)

** Do the calculation above using 0.786, 0.618, and 0.5 - [see observations](#)

Target Tool - Using Chaos PRZ - 4.669

- **Frame the M or W** (between 0 - 1) and use the fib extension tool to generate KCL's (Key Chaos Levels)
 - 0 is bottom , i.e. 1.716
 - 1 is breakout 1.9969
 - **Chaos Target/PRZ** (3.02165)
- At the **4.669 Chaos PRZ** look for confluence, in this case there is a 0.382 fib level
- This is a **location tool** - target and PRZ levels
- Notice how 1.618, 2, 2.618 KCL's **provide support /resistance** going forward
- Have had better success using line chart (close values) or **candle bodies for projections**



Target Tool - Using Bobo PRZ - 8.77

- **Frame the M or W** (between 0 - 1) and use the fib extension tool to generate KCL's (Key Chaos Levels)
 - 0 is bottom , i.e. 1.716
 - 1 is breakout 1.9969
 - **Bobo PRZ** (4.167)
- At the **8.77 level** look for **confluence**, in this case there is a 0.618 fib level
- This is a **location tool** - target and PRZ levels
- Notice how 1.618, 2, 2.618 & 4.669 KCL's **provide support /resistance** going forward
- Have had better success using line chart (close values) or **candle bodies for projections**



Fib extension observations

- Fib extension and breakout levels
 - 4.669 (Chaos PRZ) - lines up with 0.786 breakout
 - 8.77 (Bobo PRZ) - lines up with 0.886 breakout
 - 2.168 - Lines up with 0.618 breakout
 - 2.00 - Lines up with 0.50 breakout



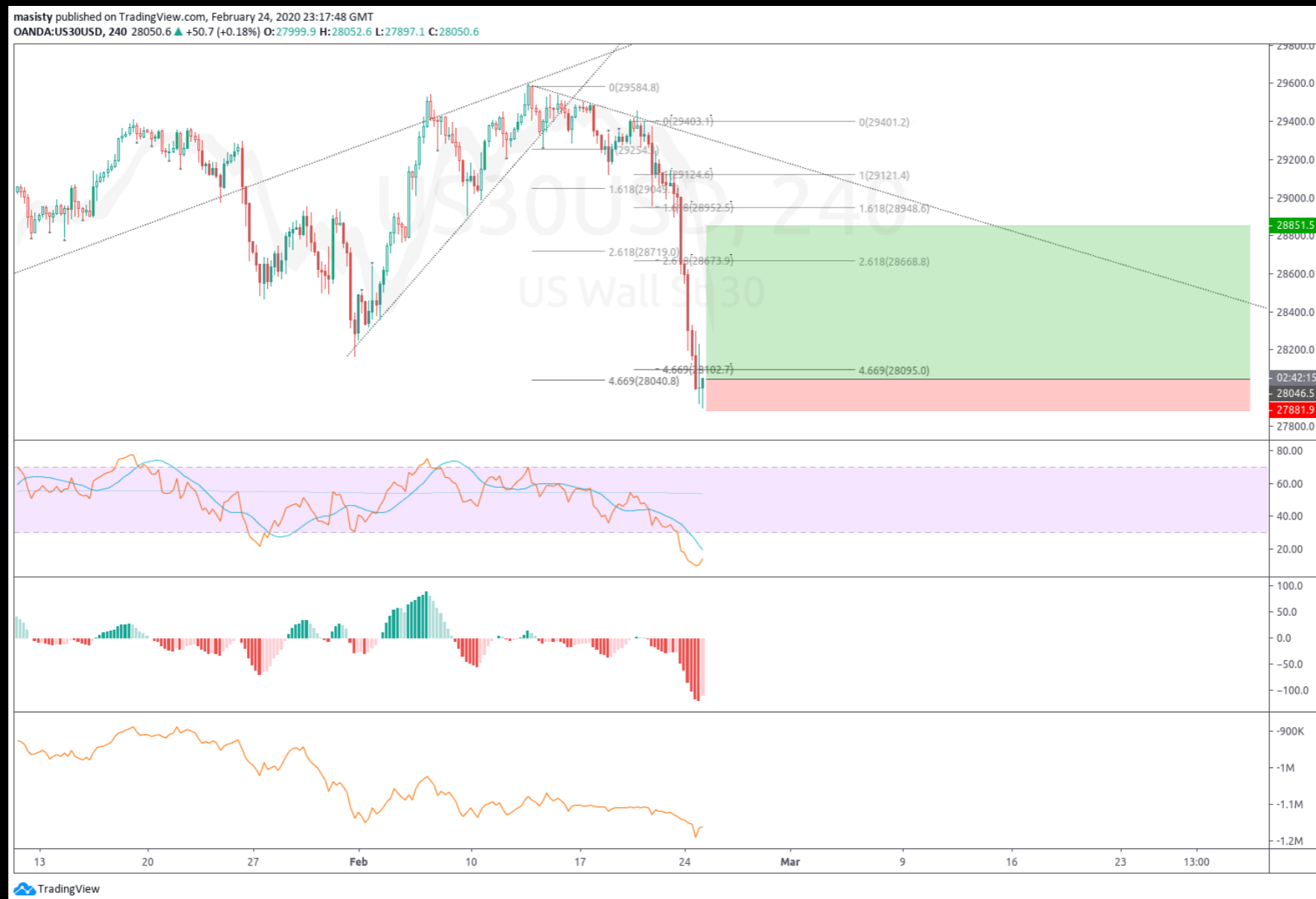
Trades - To the PRZ Zones (Target)

- Examples of trades to **Chaos PRZ** (4.669) and **Bobo PRZ** (8.77)



Trades - At the PRZ Zones (Reversal)

- Examples of trades at “Chaos PRZ” (4.669) location tool, waiting for momentum indicators and structure to confirm reversal - only a potential reversal



Linear Regression - Chaos Bands

- Suggest Levels to set for upper and lower deviation
 - 1.618; 2.00; 2.618; 3.14; 3.618; 4.669 & 8.77
- For the “Count” field use the ruler (date range) and measure the **number of bars** from low/high to present bar
- Look to **trade at the lower and upper level**, not the mid line
- This is a **location tool only**, use momentum indicators and validate structure before entering trades



Appendix



Linear Regression 1.618



masisty published on TradingView.com, March 09, 2020 19:41:29 GMT
BATS:TIP-BATS:TLT, 1M -52.45 ▼ -8.22 (-18.58%) O:-35.04 H:-32.12 L:-56.58 C:-52.45



Linear Regression 2.0 & -1.618



masisty published on TradingView.com, March 09, 2020 21:14:53 UTC
BITSTAMP:BTCUSD, 1D 7869.41 ▼ -164.29 (-2.05%) O:8035.79 H:8191.13 L:7636.00 C:7869.41



Linear Regression 2.0 & 2.618



masisty published on TradingView.com, March 09, 2020 20:31:16 GMT
OANDA:AU200AUD, 2W 5451.4 ▼ -628.4 (-10.34%) O:6317.4 H:6522.6 L:5350.9 C:5451.4



Linear Regression 3.14



masisty published on TradingView.com, March 09, 2020 19:48:28 GMT
OANDA:SPX500USD, 1M 2782.2 ▼ -182.3 (-6.15%) O:2989.4 H:3138.3 L:2716.8 C:2781.6



Linear Regression 3.14



masisty published on TradingView.com, March 09, 2020 19:53:35 GMT
COMEX_DL:GC1!, 1M 1674.6 ▲ +2.2 (+0.13%) O:1592.8 H:1704.3 L:1576.3 C:1674.6



Linear Regression 3.618



masisty published on TradingView.com, March 09, 2020 19:51:36 GMT
COMEX_DL:GC1!, 1M 1674.5 ▲ +2.1 (+0.13%) O:1592.8 H:1704.3 L:1576.3 C:1674.5



Includes the ~46 year trend line from the previous slide

Linear Regression 4.669



masisty published on TradingView.com, March 09, 2020 18:32:58 GMT
BATS:MSFT, 2W 151.83 ▼ -9.74 (-6.03%) O:165.31 H:175.00 L:150.00 C:151.86



Linear Regression 4.669

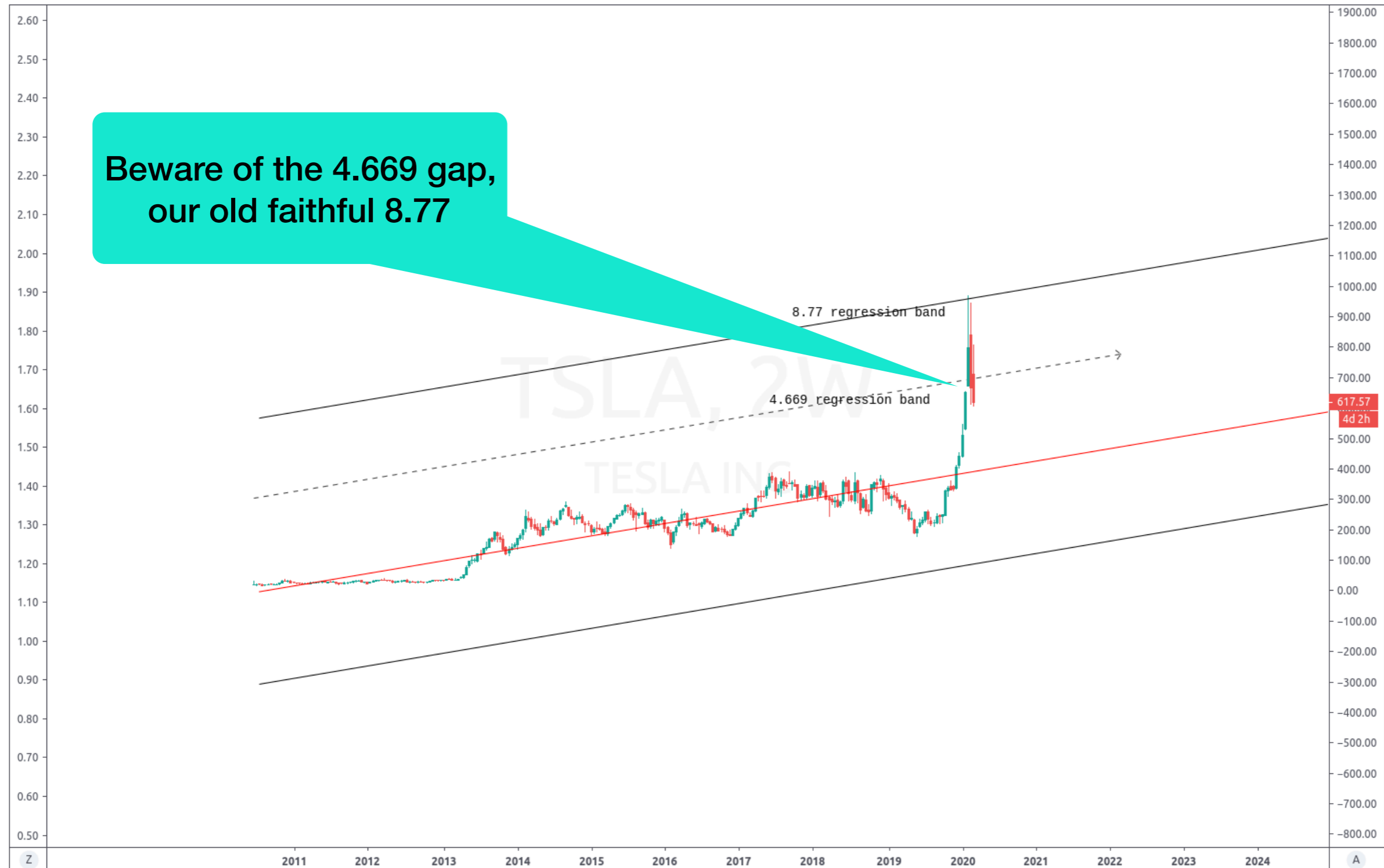


masisty published on TradingView.com, March 09, 2020 18:29:21 GMT
BATS:AAPL, 2W 269.65 ▼ -19.38 (-6.71%) O:282.28 H:304.00 L:263.00 C:269.65



Linear Regression 8.77

masisty published on TradingView.com, March 09, 2020 18:31:43 GMT
BATS:TSLA, 2W 617.57 ▼ -85.91 (-12.21%) O: 711.26 H: 806.98 L: 605.00 C: 617.57





Thank You / Questions